

## Module Packaging Options

### Up to 50 Watts/Cubic Inch SlimMod™

Vicor's PC-mountable power components are available in flangeless "SlimMod" package configurations that provide users with the highest power density available in printed circuit mount applications.

To order the SlimMod configuration, add the suffix "S" to the standard part number.  
Example: VI-260-CV-S.

*Full- and Half-Size  
SlimMods*

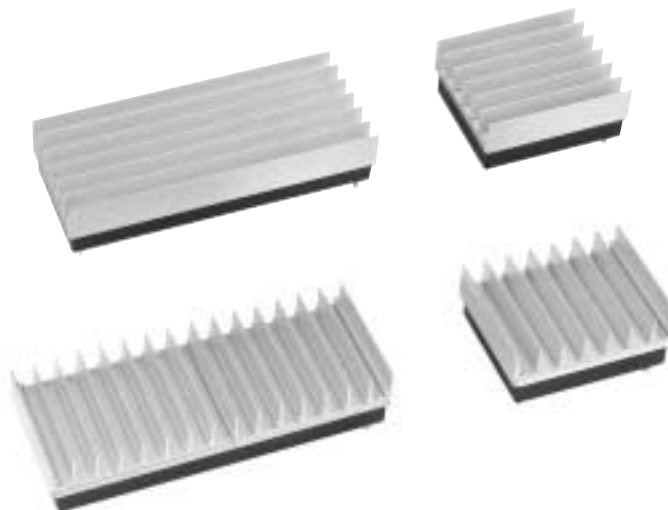


### FinMod™

Vicor's PC-mountable power components are also available in flangeless "FinMod" package configurations with integral finned heatsinks. FinMods eliminate the need for secondary heatsink assembly operations.

The full-size and half-size module components are available in .25 and .5 inch longitudinal or transverse fin versions. To order the longitudinal fin configurations add the suffix "F1" (.25 inch) or "F2" (.5 inch) to the standard part number.\* For transverse fins, add the suffix "F3" (.25 inch) or "F4" (.5 inch) to the standard part number.

*Longitudinal and  
Transverse FinMods*



\*F1 and F2 FinMods are now 7-fin products as shown. A 14-fin version is available by specifying F5 or F6.

## BusMod™

---

The BusMod is a rugged module housing assembly that combines convenient chassis mounting with a screw/lug wiring interface for all electrical connections. To order the BusMod option, add “B1” to the standard part number.

**NOTE:** The BusMod may be used with any of Vicor’s full-size modules, with the exception of the VI-HAM.

*BusMod Module  
Housing Assembly*

